

ELECON

TRACTION TYPE HYDROKINETIC FLUID COUPLING



Catalogue No.: 149/G/11/07 R3

radicon 
An Elecon Group Company

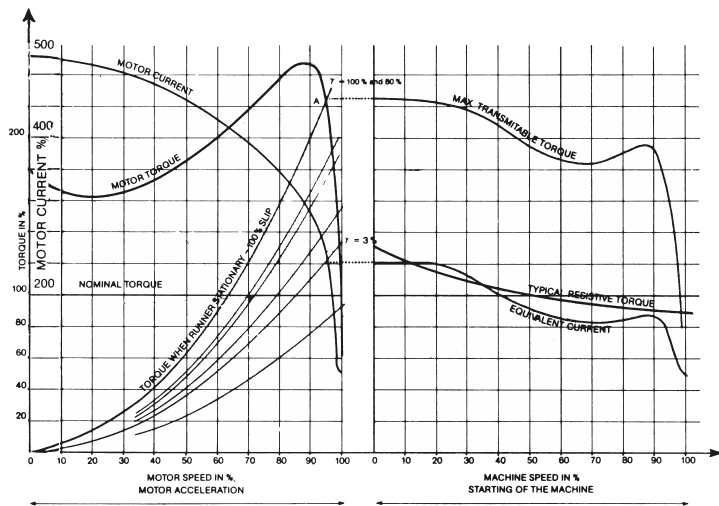
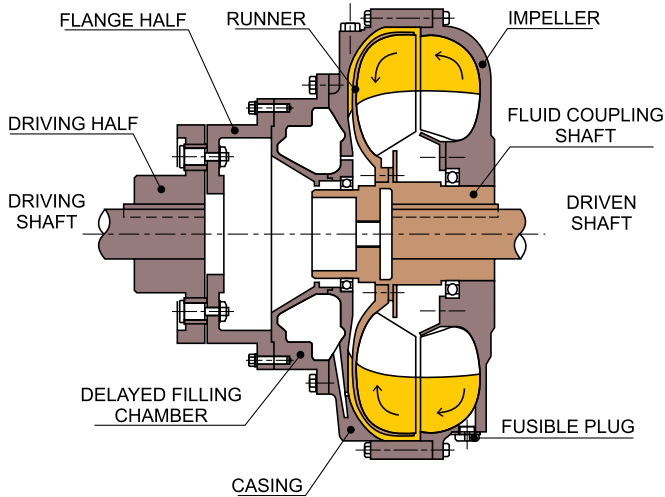
 **ELECON**
GEARING THE FUTURE

benzlers 
An Elecon Group Company

www.elecon.com

Hydrokinetic Fluid Couplings

SELECTION OF TRACTION TYPE FLUID COUPLINGS AS A FUNCTION OF POWER TRANSMITTED AND INPUT SPEED.



The graph shows how, With the use of fluid coupling demand during acceleration of the load is kept to an acceptable value: thus, favouring the use of a squirrel cage motor. After switch-on, as the motor accelerates, the torque transmitted by the fluid coupling builds up according to curve OA in the lefthand graph while the output shaft is stationary. The motor thus has available a high surplus of torque and so accelerates to point a very rapidly.

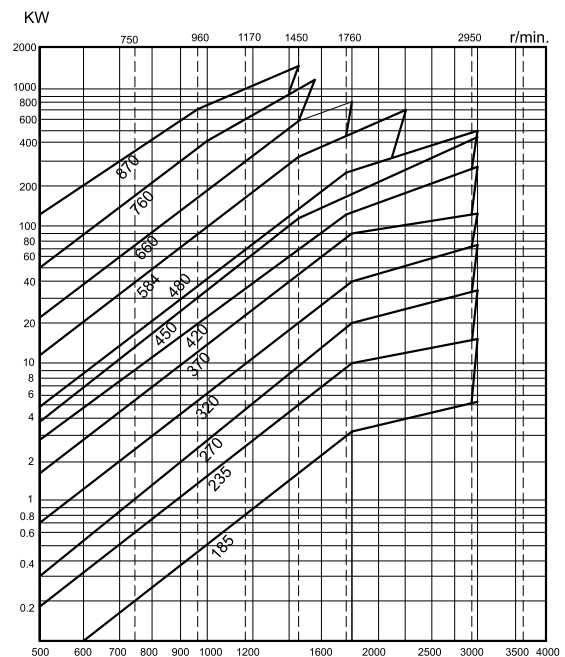
The abrupt start usually associated with squirrel cage motor is cushioned by a fluid coupling. It assures a very smooth start and protects the machine in event of jamming or overload: because the fluid coupling acts as torque limiter the inertia of motor rotor is not transmitted in a damaging way.

SELECTION TABLE							
POWER TRANSMITTED IN kW							
MOTOR SPEED (rpm)	750	960	1170	1450	1760	2950	
FLUID COUPLING SIZE	185	0.2	0.45	0.75	1.5	3	5
	235	0.6	1.3	2.3	4.5	9	15
	270	1.1	2.5	4.5	9	17	28
	320	2.5	5.5	10	22	38	65
	370	5.5	12	22	45	90	132
	420	10	22	40	80	150	250
	450	16.7	35	72	132	185	450
	480	22	45	80	160	250	500
	584	40	100	175	340	500	
	660	80	180	310	600	700	
760	180	350	580	950			

When the fluid coupling is filled with oil to the appropriate level and the motor is switched on, oil in the passages between the vanes of the impeller is accelerated radially outwards gaining energy all the time until it reaches the maximum circuit diameter. The oil then passes from the impeller to the runner in which it is forced to move inwards between the vanes and as its radial velocity falls energy is transferred to the runner and output shaft. Because the oil passes directly from the impeller to the runner, (there is no reaction member, as in torque converter), the efficiency is high, with full load slips of between 2 To 5 % being achieved in practice and depending on the application and size selection. Windage and oil circulation losses are negligible therefore efficiency equals 100% slip %. Should an overload occur the fluid coupling will stall, i.e. slip 100% at a torque value determined by the initial oil filling level. Thus, motor and machine are both protected.

- ELECON constant filling fluid coupling have the following advantages:
- PERFORMANCE**
The level of performance achieved by fluid coupling is governed mainly by the design of its working circuit which includes the shape of the circuit, number of vanes in the circuit, the vanes placement etc. The working circuit developed by elecon is out of number of years of experience in the field and is vital in the performance of the fluid coupling. Elecon fluid couplings are very rugged in construction simple in design and reliable in operation.
 - REDUCED STARTING CURRENT**
when elecon fluid coupling is connected to the drive system it allows the motor to start practically at no load. This results in reduces starting current enabling quick start and acceleration of the drive motor.
 - SOFT START**
It gives gradual start to driven equipment and thus provides smooth and shockless transmission.
 - LOW MAINTENANCE COST**
Driving and driven equipment suffer less wear and tear and thus there is reduction in electrical and mechanical maintenance cost.
 - PROTECTION TO MOTOR AND MACHINE**
In case of overload, accidental jamming, the transmission torque is limited by the fluid coupling and thereby providing protection to the electric motor and connected machine. In case of extended jamming period, fusible plug blow off will empty the fluid coupling thereby disconnecting the output from the input and protecting both driving and driven equipment.

To prevent the loss of oil and to have an additional safety device, thermal trig switch can be provided when demanded in addition to the fusible plug.



The table shows maximum power ratings for each size of fluid coupling at different motor speeds. The chart may be used for preliminary size selection when drive power and motor speeds are known. When electric motor is being used the selection chart allows twice motor full load torque for starting.

For Dual drive application Fluid coupling with multi disc type are more suitable.

TRACTION TYPE FLUID COUPLINGS

DESCRIPTION

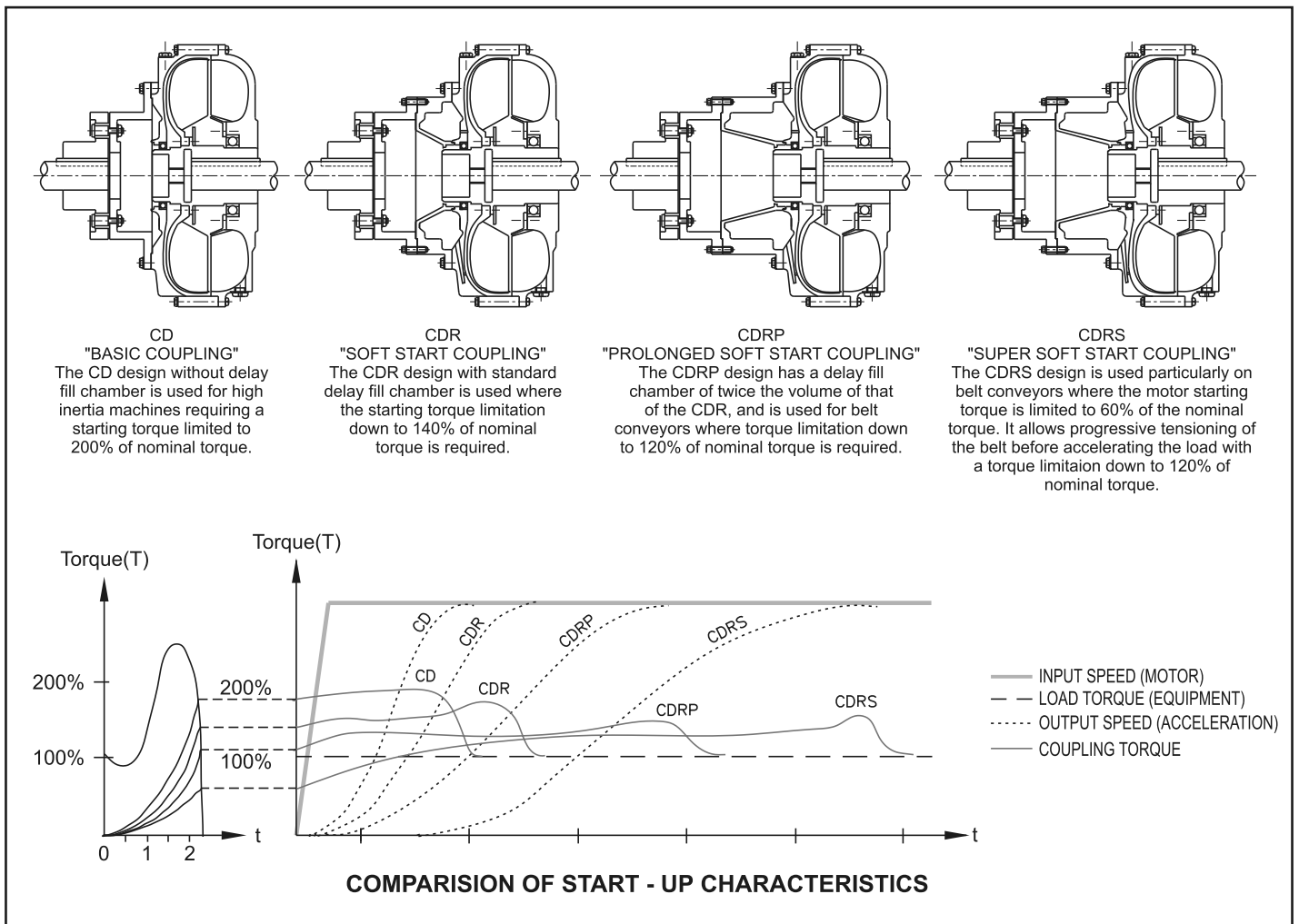
These are following types of ELECON traction couplings:

- CD : Coupling without delayed filling chamber
- CDR : Coupling with delayed filling chamber
- CDRP : Coupling with extended delayed filling chamber
- CDRS : Coupling with extended delayed filling chamber and controlled nozzles.

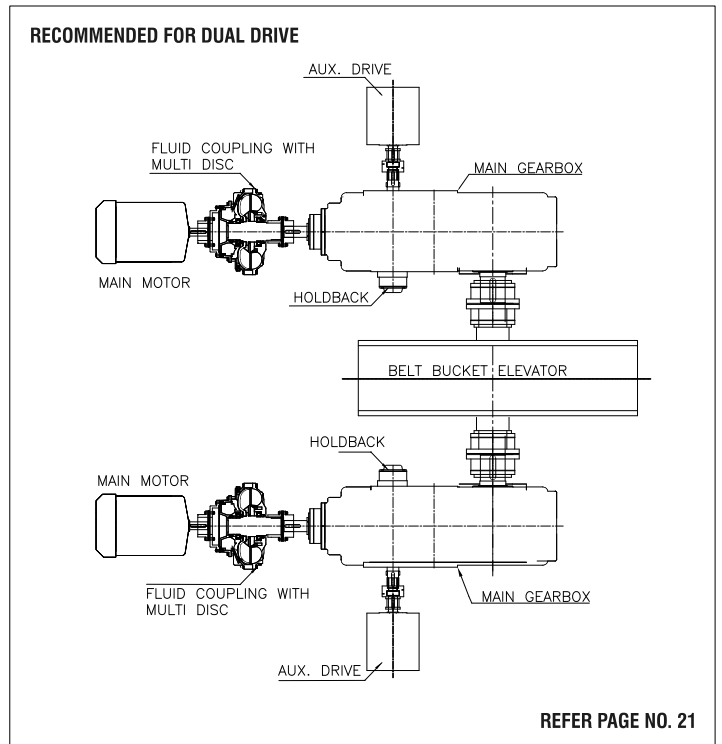
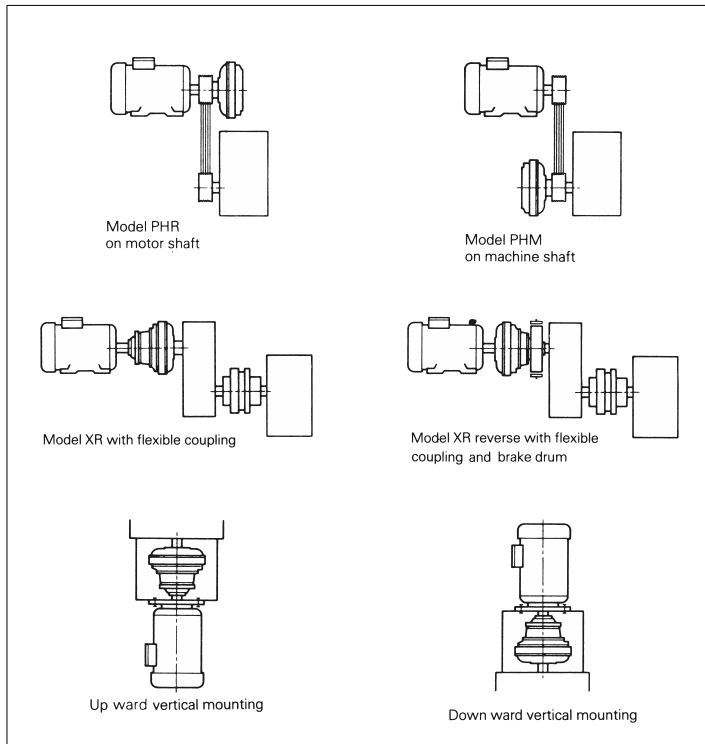
- Type CD consists of impeller, driven by motor and a runner, driving the output shaft, which together with casing forms an oil tight unit.
- The working circuit includes a central bypass chamber which in conjunction with baffle helps to limit the torque conditions of high slip without sacrificing efficiency under normal running conditions.
- Type CDR includes in addition a delayed filling chamber attached to the casing communicating with the working circuit by means of holes.
- This permits machines to start reduced torque e.g. 1.4 times full load torque.
- Type CDRP has an extra-large delayed filling chamber. This allows low starting torques (1.2 times full load torque) and low full load slip.
- Type CDRS had an extra-large, delayed filling chamber with controlled nozzles. This allows very low starting torques (0.6 times full load torque)

FLUID COUPLING TYPES AND MOUNTINGS

1. Model CDR-XR (hollow shaft):
An in-line arrangement with the hollow shaft of the fluid coupling generally fitted over the driven machine shaft. The connection to the motor is by means of a fully flexible coupling.
2. Model CDIR-XR (hollow shaft):
Reversed coupling with delayed filling chamber. It is possible in certain cases to mount the fluid coupling on the motor shaft with the flexible coupling on the motor shaft with the flexible coupling on the output side, this is referred as "reverse mounting" (model XR reversed).
3. Model PH (with "V-belt" pulleys):
This is combinations of fluid coupling and "V-belt" pulley.
PHR: Fluid coupling mounted on motor shaft
PHM: Fluid coupling mounted on machine shaft
4. Model CD/CDR-R:
Fluid coupling with solid shaft Also, an in-line arrangement which is mounted on motor shaft and has a solid output shaft which facilitate the radial removal of fluid coupling without disturbing motor as well as machine. There is choice of flexible couplings & brake drum.



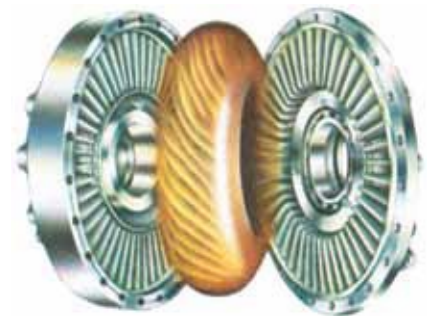
Examples of Mounting



ELECON

SOFT TOUCH GIVES YOU THE SOLUTION TO SIX MACHINE KILLING PROBLEMS

1. **Soft starts**
Start an empty conveyor with too much torque. You'll break belts. Damage idlers and wear the equipment out before its time. The soft start of Elecon fluid coupling controls torque, allowing it to build up gradually without shock loads.
2. **The right starting torque**
A fully loaded crusher or mixer takes more torque to start than a standard squirrel cage motor can safely provide. An elecon fluid coupling boosts the usable torque of motor by as much as 200% and at same time reduces current draw.
3. **Protection of the motor**
A motor slowly starting a big fan draws excessive current and is a source of electric overload and failure. The ELECON fluid couplings allows the motor to quickly accelerate to full speed, reducing current draw to normal levels in seconds.
4. **Shock absorption**
A jam in the systems can create torque loads ten times the nominal. Equipment will break. The ELECON fluid coupling will absorb this machine killing shock.
5. **Perfectly balanced motor loading**
Two or more motors driving the same load are nearly impossible to balance. But, with ELECON fluid coupling, you can balance the load easily by adjusting the amount of fluid in the coupling.
6. **Elimination of unwanted vibrations**
When the motor and driven machinery vibrate together, the resonance can cause severe damage. The ELECON fluid coupling dampens out the unwanted vibrations.



ELECON FLUID COUPLING

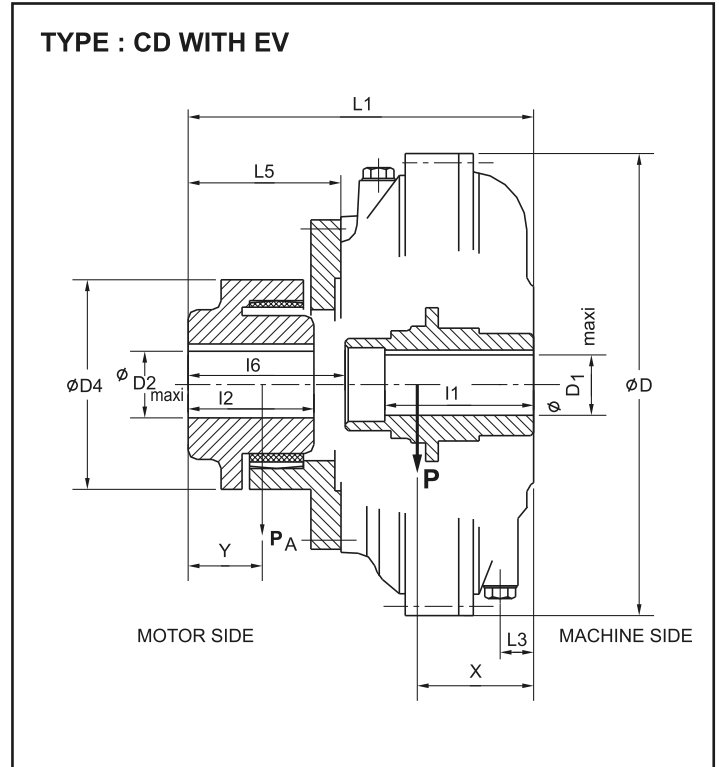
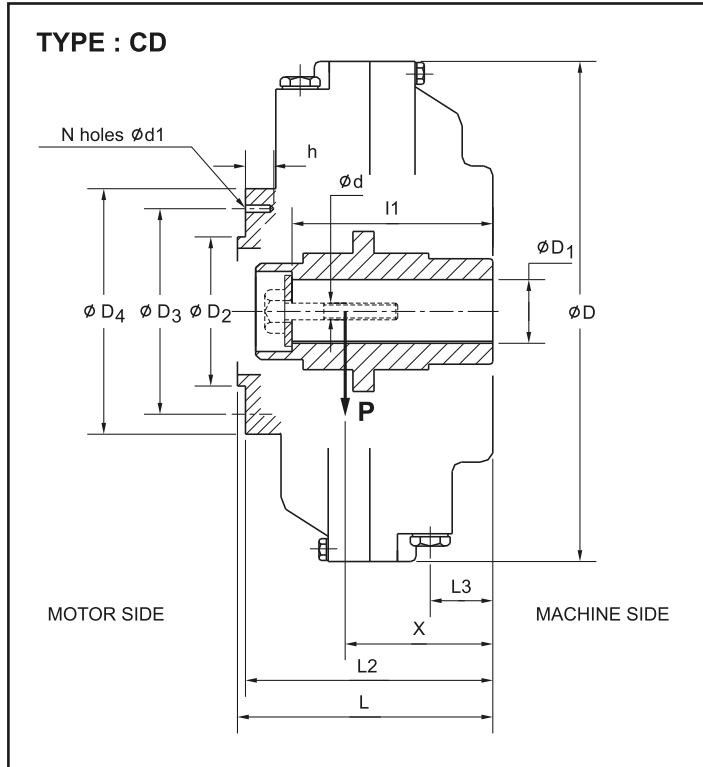


ELECON FLUID COUPLING INSTALLED WITH CRUSHER DRIVE AT GANDHINAGAR T.P.S.

Hydrokinetic Fluid Couplings
TRACTION TYPE MOUNTING : XR (Hollow Shaft)

SIZE : 185-235

TYPE : CD AND CD with Flexible Coupling EV



FLUID COUPLING	SIZE	185	235
J (kgm ²)	INPUT	0.003	0.009
	OUTPUT	0.025	0.06
WEIGHT P (DRY) x	kg	7	12
	mm	75	102
	D	225	275
	D1	38	42
	D2	71	82
	D3	97	113
	D4	110	135
	L3	116	140
	L2	114	136
	l1	85	112
	N	8	6
	d1	M5	M6
	L3	26	34
	h	14	18

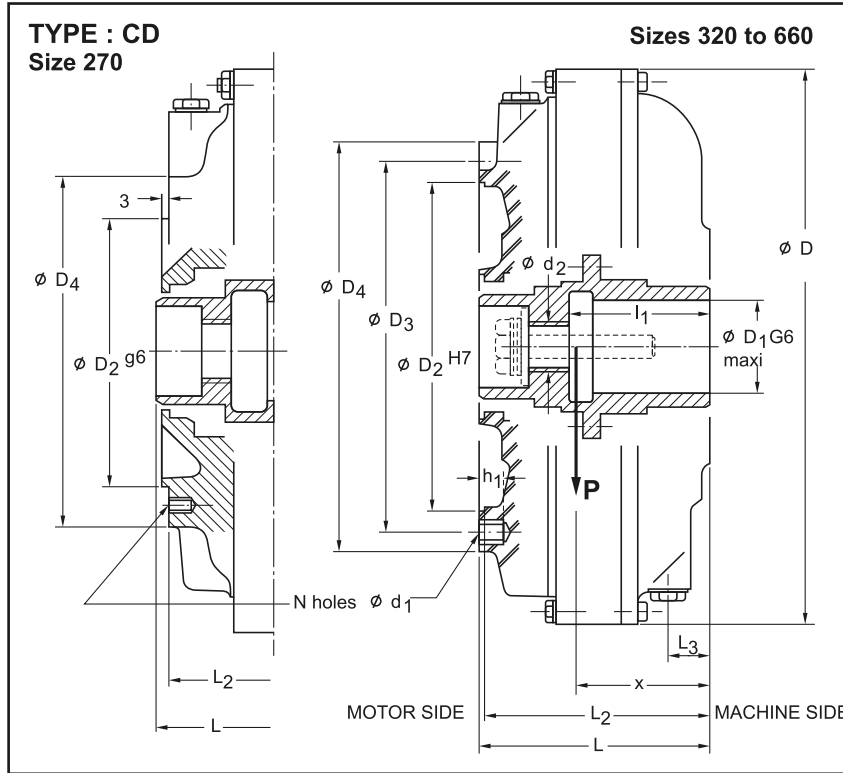
FLUID COUPLING	SIZE	185	235
FLUID COUPLING	TYPE	EV-75	235
	FLUID COUPLING	0.03	0.065
J (kgm ²)	FLEXIBLE COUPLING	0.003	0.009
	TOTAL WEIGHT (DRY)	kg	7
	kg	2.5	3
	D	225	275
	D1	38	42
	D2	30	38
	D4	70	85
	L1	165	192
	L5	51	56
	l1	85	112
	l2	45	45
	L3	26	34
	l6	55	58

Owing to continuous development and improvement all dimensions and characteristics are subject to change without notice.

Hydrokinetic Fluid Couplings
 TRACTION TYPE MOUNTING : XR (Hollow Shaft)

SIZE : 270-660

TYPE : CD



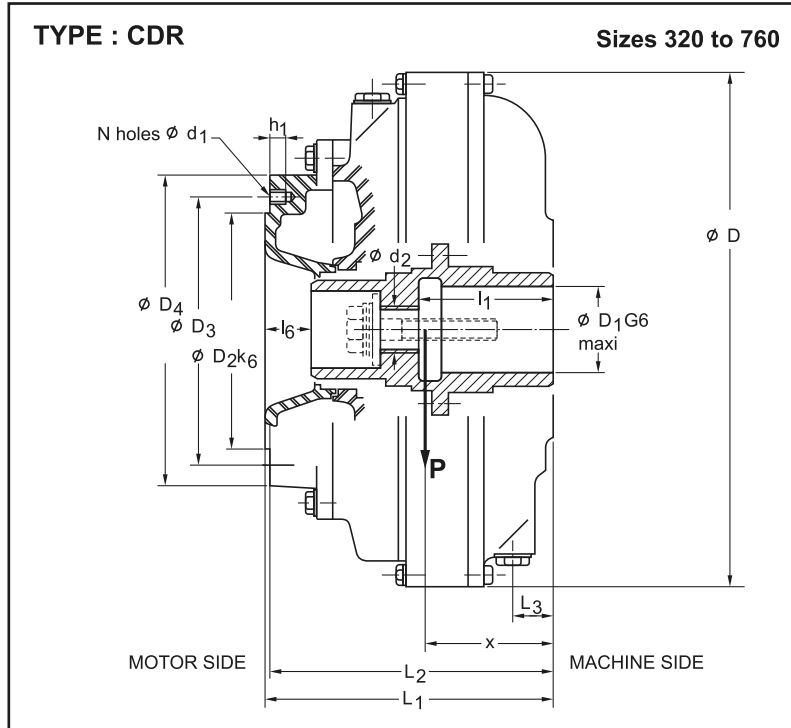
FLUID COUPLING	SIZE	270	320	370	420	450	480	584	660
J (kgm ²)	INPUT	0.12	0.24	0.47	0.72	1.16	1.33	2.9	5.3
	OUTPUT	0.02	0.04	0.08	0.16	0.23	0.36	0.83	1.45
WEIGHT P (DRY) x	kg	15	24	33	47	56	68	120	170
	mm	75	90	95	103	130	115	136	155
	D2	150	215	245	280	317	320	385	445
	D3	172	250	280	320	345	366	432	500
	D4	194	274	306	348	375	392	468	540
	L1	143	158	180	200	224	224	262	304
	L2	136	153	174	194	218	218	256	298
	N	6	12	12	12	12	12	12	12
	d1	M8	M10	M12	M12	M12	M12	M14	M14
	h1	12	18	18	18	18	18	21	21
	D	315	365	425	475	520	550	670	760
	D1	55	60	65	80	80	90	110	120
	L3	25	25	29	37	60	37	49	55
	l1	100	110	110	120	120	155	170	200
TAPPED HOLE	d2	1" BSP	1" BSP	1" BSP	1-1/4" BSP	1-1/4" BSP	1-1/4" BSP	1-1/4" BSP	1-1/4" BSP

Owing to continuous development and improvement all dimensions and characteristics are subject to change without notice.

Hydrokinetic Fluid Couplings
 TRACTION TYPE MOUNTING : XR (Hollow Shaft)

SIZE : 320-760

TYPE : CDR



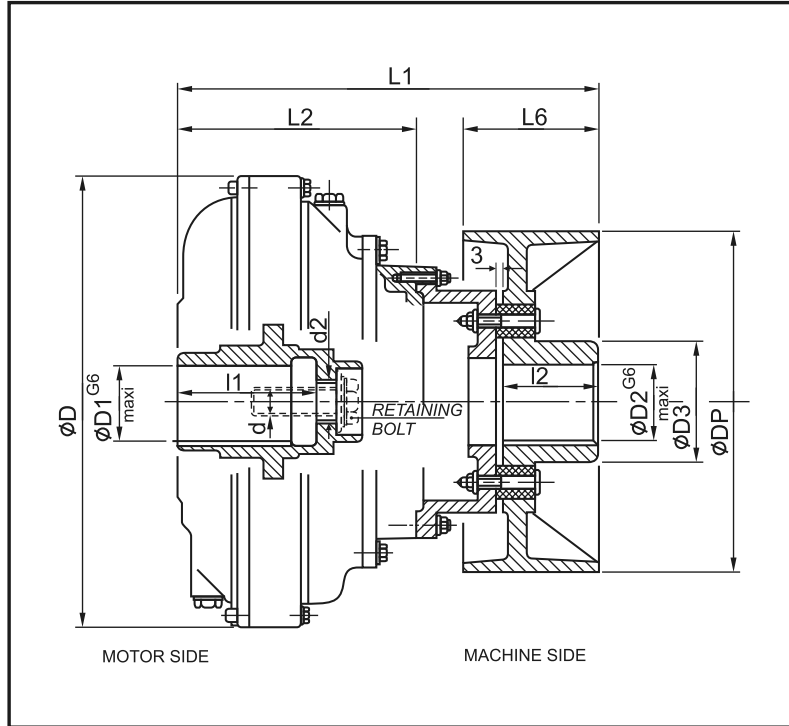
FLUID COUPLING	SIZE	320	370	420	450	480	584	660	760	
J (kgm ²)	INPUT	0.25	0.48	0.74	1.3	1.35	2.95	5.4	9.5	
	OUTPUT	0.04	0.08	0.16	0.23	0.36	0.83	1.45	2.6	
WEIGHT P (DRY) x	kg	26	36	51	62	74	128	180	250	
	mm	110	116	135	130	155	172	200	222	
	D2	170	195	220	235	265	315	360	420	
	D3	195	228	165	260	310	360	420	480	
	D4	220	252	290	313	330	392	468	530	
	L1	206	228	260	322	300	336	389	449	
	L2	203	225	257	319	297	333	385	445	
	l6	26	28	40	-	55	47	54	54	
	N	6	8	8	12	12	16	16	20	
	d1	M12	M12	M12	M12	M12	M12	M12	M14	M16
	h1	18	18	18	18	18	18	18	21	36
	D	365	425	475	520	550	670	760	870	
	D1	60	65	80	80	90	110	120	135	
	L3	25	29	37	60	37	49	55	49	
	l1	110	110	120	120	155	170	200	240	
TAPPED HOLE	d2	1" BSP	1" BSP	1-1/4" BSP	1-1/4" BSP	1-1/4" BSP	1-1/4" BSP	1-1/4" BSP	1-1/4" BSP	

Owing to continuous development and improvement all dimensions and characteristics are subject to change without notice.

Hydrokinetic Fluid Couplings
 TRACTION TYPE MOUNTING : XR (Hollow Shaft - Reverse Mounting)

SIZE : 320-760

TYPE : CDIR with Flexible Brake Drum Coupling FCFB



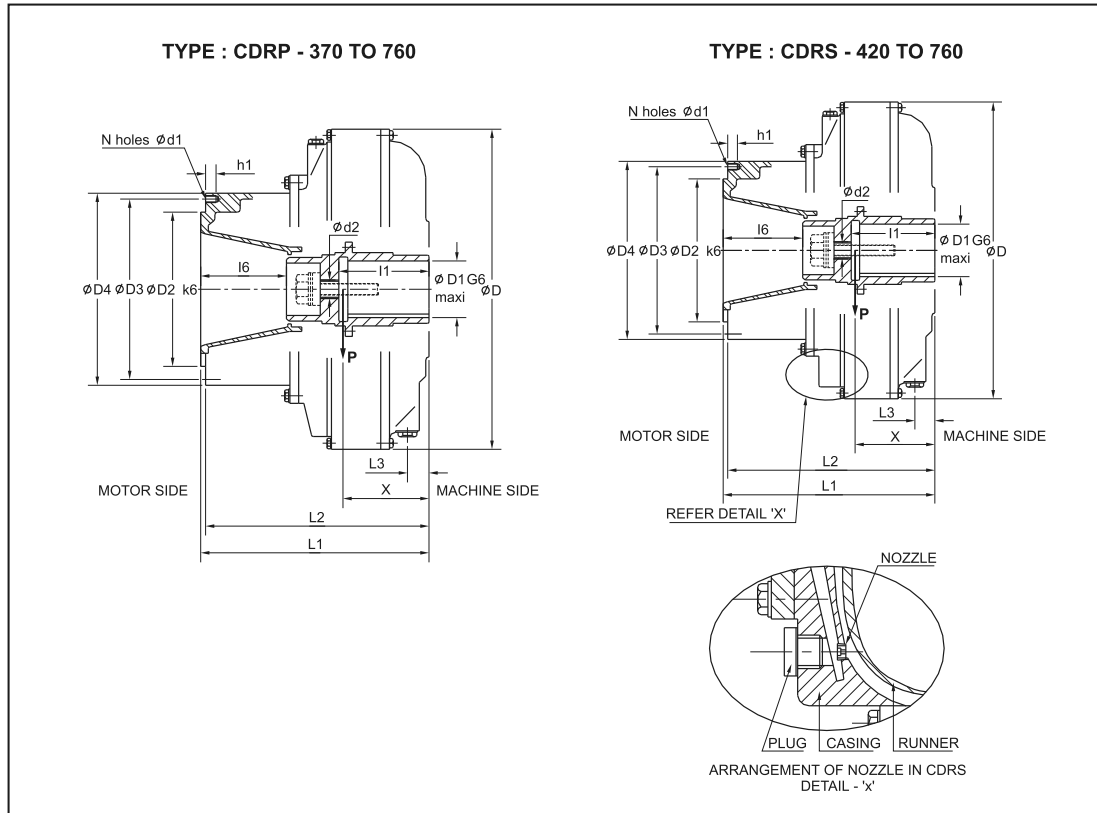
FLUID COUPLING		SIZE	320			370			420			450			480		584			660		760	
BRAKE DRUM		DIA (MM)	250	315	250	315	400	315	400	500	315	400	500	400	500	400	500	630	500	530	630	710	
FLEXIBLE COUPLING		TYPE	FCFB6			FCFB7			FCFB9			FCFB9			FCFB10		FCFB13			FCFB14		FCFB16	
FLUID COUPLING + FLEXIBLE COUPLING	J (kgm ²)	FLUID COUPLING	0.28			0.55			0.88			1.53			1.7		3.75			6.5		12.1	
		FLEXIBLE COUPLING	0.39	0.84	0.47	0.94	1.8	1.1	2.5	5.9	1.1	2.5	5.9	3.5	6.2	4.56	10	23	11.8	25.4	29.2	44	
	TOTAL WEIGHT (DRY)	FLUID COUPLING	28		38			53			62			78		135			192		262		
		FLEXIBLE COUPLING	25	34	30	38	50	47	65	95	47	65	95	80	110	114	165	225	190	270	295	350	
		D	365		425			475			520			550		670			760		870		
		D1	60		65			80			80			90		110			120		135		
		L1	380	392	392	448	437	437	520	499	499	582	544	562	603	625	656	716	804				
		L2	203		225			257			319			297		333			384		445		
		l1	110		110			120			120			155		170			200		240		
		DP	250	315	250	315	400	315	400	500	315	400	500	400	500	400	500	530	500	630	630	710	
		D2	48	48	60	60	60	80	80	80	80	80	80	90	90	100	100	100	115	115	140	140	
		L6	95	118	95	118	150	118	150	190	118	150	190	150	190	150	190	236	190	236	236	265	
		l2	75	75	70	70	95	117	117	117	117	117	117	120	120	118	159	159	120	180	146	146	
		D3	73		92			124			124			143		165			190		235		
TAPPED HOLE		d2	1" BSP		1" BSP			1-1/4" BSP			1-1/4" BSP			1-1/4" BSP		1-1/4" BSP			1-1/4" BSP		1-1/4" BSP		

Owing to continuous development and improvement all dimensions and characteristics are subject to change without notice.

Hydrokinetic Fluid Couplings
TRACTION TYPE MOUNTING : XR (Hollow Shaft)

SIZE : 370-760 , TYPE : CDRP and

SIZE : 420-760 , TYPE : CDRS



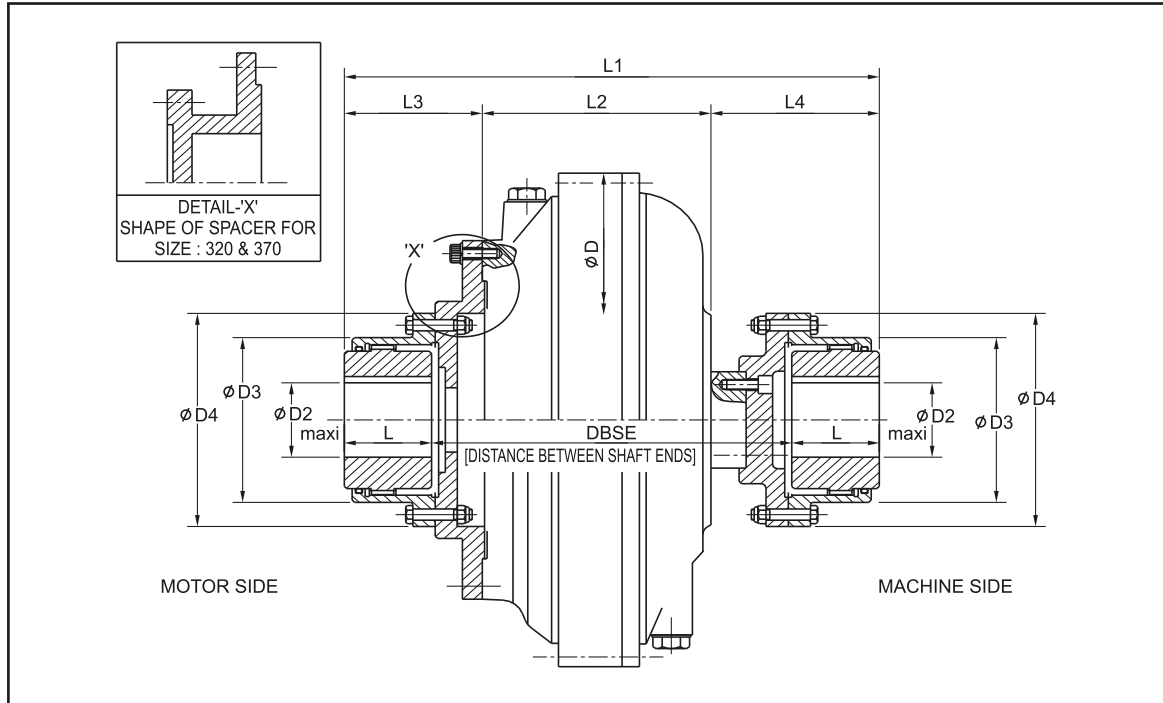
FLUID COUPLING	SIZE	370	420	480	584	660	760
J (kgm ²)	INPUT	0.51	0.8	1.46	3.2	5.85	10.3
	OUTPUT	0.08	0.16	0.36	0.83	1.45	2.6
WEIGHT P (DRY) x	kg	38	54	78	135	190	265
	mm	120	142	165	180	210	235
	D	425	475	550	670	760	870
	D1	65	80	90	110	120	135
	D2	195	220	265	315	360	420
	D3	228	265	310	360	420	480
	D4	252	290	330	392	468	530
	L1	263	339	387	433	499	572
	L2	260	336	384	430	495	568
	L3	29	37	37	49	55	49
	l1	110	120	155	170	200	240
	l6	63	119	142	144	164	177
	N	8	8	12	16	16	20
	d1	M12	M12	M12	M12	M14	M16
	h1	18	18	18	18	21	36
TAPPED HOLE	d2	1" BSP	1-1/4" BSP	1-1/4" BSP	1-1/4" BSP	1-1/4" BSP	1-1/4" BSP

Owing to continuous development and improvement all dimensions and characteristics are subject to change without notice.

Hydrokinetic Fluid Couplings
TRACTION TYPE MOUNTING : R (Solid Shaft - Radially removable)

SIZE : 320-660

TYPE : CD-R with Elign Gear Coupling ED



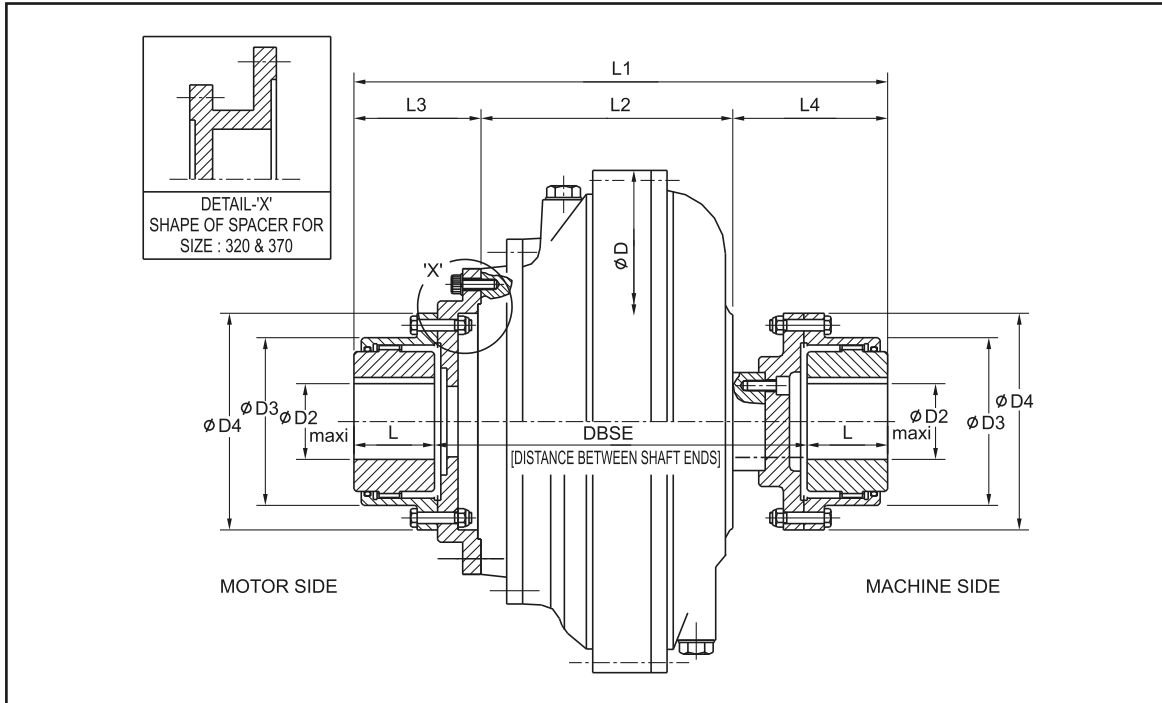
FLUID COUPLING		CD-R	320	370	420	450	480	584	660	
ELIGN GEAR COUPLING		ED	500	1000	1000	1000	1600	2200	3200	
FLUID COUPLING + GEAR COUPLING	J (kgm ²)	FLUID COUPLING		0.3	0.6	0.96	1.42	1.85	4.1	7.43
		FLUID COUPLING	INPUT	0.08	0.14	0.27	0.27	0.48	1.22	2.25
	OUTPUT		0.02	0.09	0.09	0.09	0.16	0.36	0.66	
	TOTAL WEIGHT (DRY)	FLUID COUPLING		27	36	52	57	75	132	187
		GEAR COUPLING	INPUT	14	25.2	27	27	37	65	90
			OUTPUT	11	21	21	21	28	44	67
D		365	425	475	520	550	670	760		
D2		75	95	95	95	110	130	155		
D3		129.5	156	156	156	181	209	247		
D4		171	210	210	210	234	274	312		
L		62	76	76	76	90	105	120		
DBSC		306	351	366	390	357	416	475		
L1		430	503	518	542	537	626	715		
L2		158	180	200	224	224	262	304		
L3		148	171	155	155	144	168	192		
L4		124	152	163	163	169	196	219		

Owing to continuous development and improvement all dimensions and characteristics are subject to change without notice.

Hydrokinetic Fluid Couplings
 TRACTION TYPE MOUNTING : R (Solid Shaft - Radially removable)

SIZE : 320-660

TYPE : CDR-R with Elign Gear Coupling ED



FLUID COUPLING		CDR-R	320	370	420	450	480	584	660	760	
ELIGN GEAR COUPLING		ED	500	1000	1000	1000	1600	2200	3200	4500	
FLUID COUPLING + GEAR COUPLING	J (kgm ²)	FLUID COUPLING	0.32	0.62	0.99	1.56	1.88	4.15	7.54	13.3	
		FLUID COUPLING	INPUT	0.05	0.13	0.19	0.19	0.34	0.7	1.52	2.53
	OUTPUT		0.02	0.09	0.09	0.09	0.16	0.36	0.66	1.01	
	TOTAL WEIGHT (DRY)	FLUID COUPLING		29	40	56	67	81	141	198	275
		GEAR COUPLING	INPUT	13	23	24	24	33	47	78	104
			OUTPUT	11	21	21	21	28	44	67	86
D		365	425	475	520	550	670	760	870		
D2		75	95	95	95	110	130	155	175		
D3		129.5	156	156	156	181	209	247	273		
D4		171	210	210	210	234	274	312	337		
L		62	76	76	76	90	105	120	135		
DBSC		351	396	423	485	430	487	555	635		
L1		475	548	575	637	610	697	795	905		
L2		203	225	257	319	297	333	384	445		
L3		148	171	155	155	144	168	192	210		
L4		124	152	163	163	169	196	219	250		

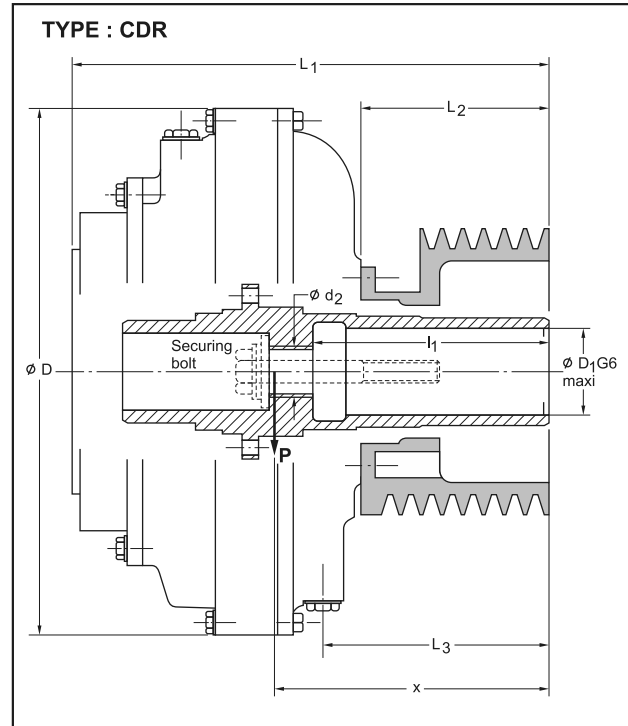
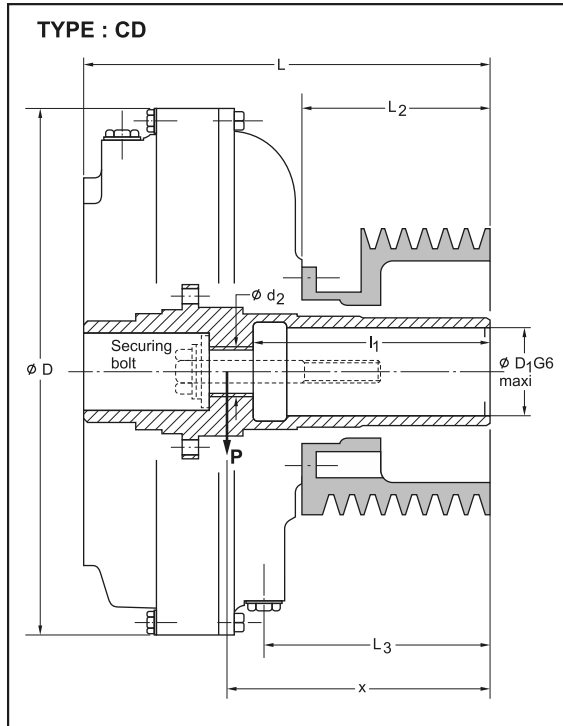
Owing to continuous development and improvement all dimensions and characteristics are subject to change without notice.

Hydrokinetic Fluid Couplings
TRACTION TYPE MOUNTING : PH (V-BELT PULLEY)

SIZE : 270-370

TYPE : CD and CDR

- MOUNTING : ● On Motor Shaft (PHR)
● On Machine Shaft (PHM)



FLUID COUPLING		SIZE	270	320	370
TYPE CD	J* (kgm ²)	INPUT	0.02	0.04	0.07
		OUTPUT	0.12	0.24	0.47
	WEIGHT P (Dry & without Pulley)	kg	17	26	36
	x	mm	140	168	200
	L	mm	251	273	322
TYPE CDR	J* (kgm ²)	INPUT	-	0.04	0.07
		OUTPUT	-	0.25	0.48
	WEIGHT P (Dry & without Pulley)	kg	-	29	40
	x	mm	-	180	210
	L	mm	-	320	370
	D		315	365	425
	D1		50	55	60
	L2		110	115	140
	L3		135	142	167
	l1		165	165	190
	d2		1" BSP	1" BSP	1" BSP

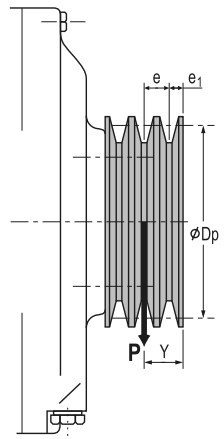
J* Values of inertia for PHR
For PHM the values of inertia are reversed for primary and secondary parts.

Hydrokinetic Fluid Couplings
TRACTION TYPE MOUNTING : PH

SIZE : 270-370

PROFILE OF GROOVES : SPA-SPB-SPC

Coupling Size (mm)	Profile Groove	N Grooves	Symbols	PITCH CIRCLE DIAMETER																																		
				140	150	160	170	180	190	200	212	224	236	250	265	280	300	315	335	355																		
270	SPA	3	J P Y	0.021 5.8 45	0.029 7.4 45	0.04 9.1 45	0.052 11 45	0.067 13 45	0.084 15 45	0.10 17 45	0.14 20 45	0.17 23 45	0.21 26 45	<table border="1" style="margin-left: auto; margin-right: auto;"> <thead> <tr> <th>Profile Type</th> <th>SPA 13X8</th> <th>SPB 17X11</th> <th>SPC 22X14</th> </tr> </thead> <tbody> <tr> <td>e</td> <td>15</td> <td>19</td> <td>25</td> </tr> <tr> <td>e1</td> <td>9</td> <td>11</td> <td>15</td> </tr> </tbody> </table> <p style="text-align: center;">For other profiles refer to ELECON</p> <p style="text-align: center;">*J = kgm² P = kg Y = mm</p>													Profile Type	SPA 13X8	SPB 17X11	SPC 22X14	e	15	19	25	e1	9	11	15
		Profile Type	SPA 13X8	SPB 17X11	SPC 22X14																																	
		e	15	19	25																																	
	e1	9	11	15																																		
	4	J P Y	0.021 5.8 45	0.029 7.4 45	0.04 9.1 45	0.052 11 45	0.067 13 45	0.084 15 45	0.10 17 45	0.14 20 45	0.17 23 45	0.21 26 45																										
	5	J P Y	0.021 5.8 45	0.029 7.4 45	0.04 9.1 45	0.052 11 45	0.067 13 45	0.084 15 45	0.10 17 45	0.14 20 45	0.17 23 45	0.21 26 45																										
	SPB	2	J P Y	0.021 5.8 45	0.029 7.4 45	0.04 9.1 45	0.052 11 45	0.067 13 45	0.084 15 45	0.10 17 45	0.14 20 45	0.17 23 45	0.21 26 45																									
		3	J P Y	0.021 5.8 45	0.029 7.4 45	0.04 9.1 45	0.052 11 45	0.067 13 45	0.084 15 45	0.10 17 45	0.14 20 45	0.17 23 45	0.21 26 45																									
		4	J P Y	0.021 5.8 45	0.029 7.4 45	0.04 9.1 45	0.052 11 45	0.067 13 45	0.084 15 45	0.10 17 45	0.14 20 45	0.17 23 45	0.21 26 45																									
SPC	2	J P Y		0.029 7.4 45	0.04 9.1 45	0.052 11 45	0.067 13 45	0.084 15 45	0.10 17 45	0.14 20 45	0.17 23 45	0.21 26 45																										
	3	J P Y		0.029 7.4 45	0.04 9.1 45	0.052 11 45	0.067 13 45	0.084 15 45	0.10 17 45	0.14 20 45	0.17 23 45	0.21 26 45																										
320	SPA	3	J P Y			0.039 8.8 56	0.052 11 56	0.067 13 56	0.085 15 56	0.11 17 56	0.14 20 63	0.17 23 63	0.22 26 63	0.27 30 36	0.34 34 63	0.42 39 63	0.55 46 63	0.67 52 63																				
		4	J P Y			0.039 8.8 56	0.052 11 56	0.067 13 56	0.085 15 56	0.11 17 56	0.14 20 63	0.17 23 63	0.22 26 63	0.27 30 36	0.34 34 63	0.42 39 63	0.55 46 63	0.67 52 63																				
		5	J P Y			0.039 8.8 56	0.052 11 56	0.067 13 56	0.085 15 56	0.11 17 56	0.14 20 63	0.17 23 63	0.22 26 63	0.27 30 36	0.34 34 63	0.42 39 63	0.55 46 63	0.67 52 63																				
	SPB	2	J P Y			0.039 8.8 56	0.052 11 56	0.067 13 56	0.085 15 56	0.11 17 56	0.14 20 63	0.17 23 63	0.22 26 63	0.27 30 36	0.34 34 63	0.42 39 63	0.55 46 63	0.67 52 63																				
		3	J P Y			0.039 8.8 56	0.052 11 56	0.067 13 56	0.085 15 56	0.11 17 56	0.14 20 63	0.17 23 63	0.22 26 63	0.27 30 36	0.34 34 63	0.42 39 63	0.55 46 63	0.67 52 63																				
		4	J P Y			0.039 8.8 56	0.052 11 56	0.067 13 56	0.085 15 56	0.11 17 56	0.14 20 63	0.17 23 63	0.22 26 63	0.27 30 36	0.34 34 63	0.42 39 63	0.55 46 63	0.67 52 63																				
	SPC	2	J P Y			0.039 8.8 56	0.052 11 56	0.067 13 56	0.085 15 56	0.11 17 56	0.14 20 63	0.17 23 63	0.22 26 63	0.27 30 36	0.34 34 63	0.42 39 63	0.55 46 63	0.67 52 63																				
		3	J P Y			0.039 8.8 56	0.052 11 56	0.067 13 56	0.085 15 56	0.11 17 56	0.14 20 63	0.17 23 63	0.22 26 63	0.27 30 36	0.34 34 63	0.42 39 63	0.55 46 63	0.67 52 63																				
	370	SPA	4	J P Y			0.081 15 60	0.1 17 60	0.13 20 60	0.17 24 60	0.21 27 60	0.31 31 73	0.40 37 73	0.51 43 73	0.64 50 73	0.85 60 73	1 67 73	1.3 78 73	1.7 90 73																			
5			J P Y			0.081 15 60	0.1 17 60	0.13 20 60	0.17 24 60	0.21 27 60	0.31 31 73	0.40 37 73	0.51 43 73	0.64 50 73	0.85 60 73	1 67 73	1.3 78 73	1.7 90 73																				
6			J P Y			0.081 15 60	0.1 17 60	0.13 20 60	0.17 24 60	0.21 27 60	0.31 31 73	0.40 37 73	0.51 43 73	0.64 50 73	0.85 60 73	1 67 73	1.3 78 73	1.7 90 73																				
SPB		3	J P Y			0.081 15 60	0.1 17 60	0.13 20 60	0.17 24 60	0.21 27 60	0.31 31 73	0.40 37 73	0.51 43 73	0.64 50 73	0.85 60 73	1 67 73	1.3 78 73	1.7 90 73																				
		4	J P Y			0.081 15 60	0.1 17 60	0.13 20 60	0.17 24 60	0.21 27 60	0.31 31 73	0.40 37 73	0.51 43 73	0.64 50 73	0.85 60 73	1 67 73	1.3 78 73	1.7 90 73																				
		5	J P Y			0.081 15 60	0.1 17 60	0.13 20 60	0.17 24 60	0.21 27 60	0.31 31 73	0.40 37 73	0.51 43 73	0.64 50 73	0.85 60 73	1 67 73	1.3 78 73	1.7 90 73																				
SPC		3	J P Y			0.081 15 60	0.1 17 60	0.13 20 60	0.17 24 60	0.21 27 60	0.31 31 73	0.40 37 73	0.51 43 73	0.64 50 73	0.85 60 73	1 67 73	1.3 78 73	1.7 90 73																				
		4	J P Y			0.081 15 60	0.1 17 60	0.13 20 60	0.17 24 60	0.21 27 60	0.31 31 73	0.40 37 73	0.51 43 73	0.64 50 73	0.85 60 73	1 67 73	1.3 78 73	1.7 90 73																				
		5	J P Y			0.081 15 60	0.1 17 60	0.13 20 60	0.17 24 60	0.21 27 60	0.31 31 73	0.40 37 73	0.51 43 73	0.64 50 73	0.85 60 73	1 67 73	1.3 78 73	1.7 90 73																				



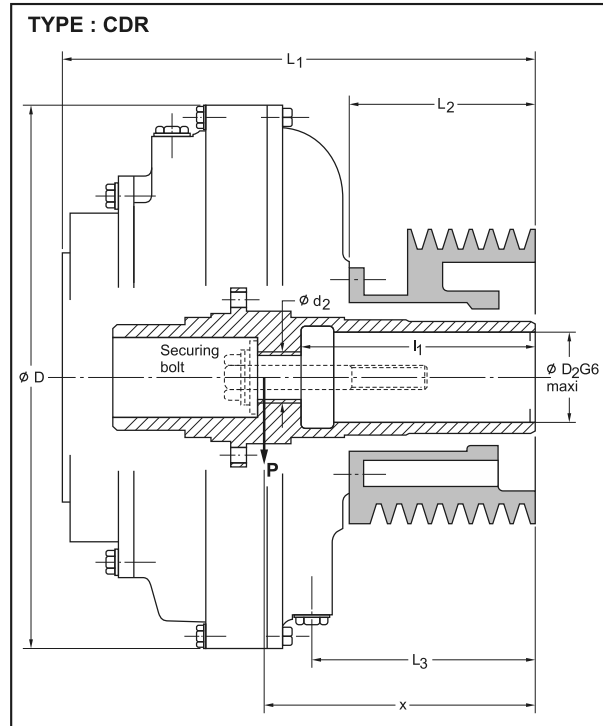
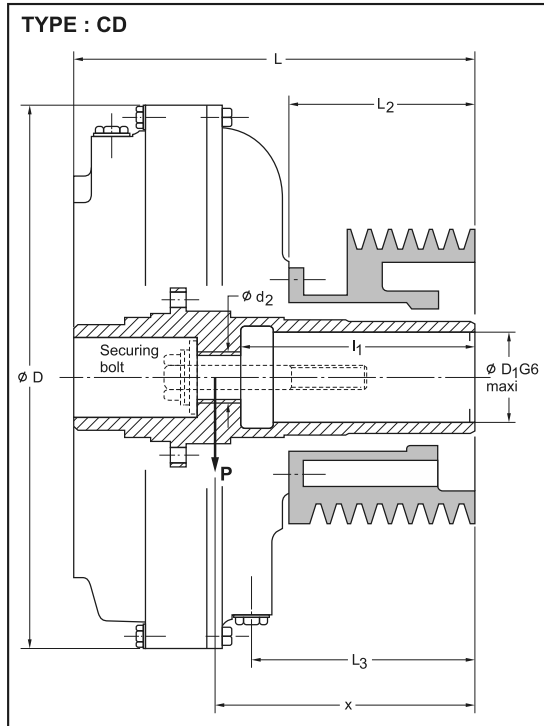
Owing to continuous development and improvement all dimensions and characteristics are subject to change without notice.

Hydrokinetic Fluid Couplings
TRACTION TYPE MOUNTING : PH (V-BELT PULLEY)

SIZE : 420-584

TYPE : CD and CDR

- MOUNTING : ● On Motor Shaft (PHR)
● On Machine Shaft (PHM)



FLUID COUPLING		SIZE	420	480	584
TYPE CD	J* (kgm ²)	INPUT	0.16	0.36	0.83
		OUTPUT	0.7	1.3	2.9
	WEIGHT P (Dry & without Pulley)	kg	51	72	125
	x	mm	236	280	290
	L	mm	368	427	467
TYPE CDR	J* (kgm ²)	INPUT	0.16	0.36	0.83
		OUTPUT	0.74	1.35	2.95
	WEIGHT P (Dry & without Pulley)	kg	56	75	134
	x	mm	250	305	320
	L	mm	428	503	541
	D		475	550	670
	D1		75	80	100
	L2		170	205	205
	L3		205	240	254
	l1		215	252	290
	d2		1-1/4" BSP	1-1/4" BSP	1-1/4" BSP

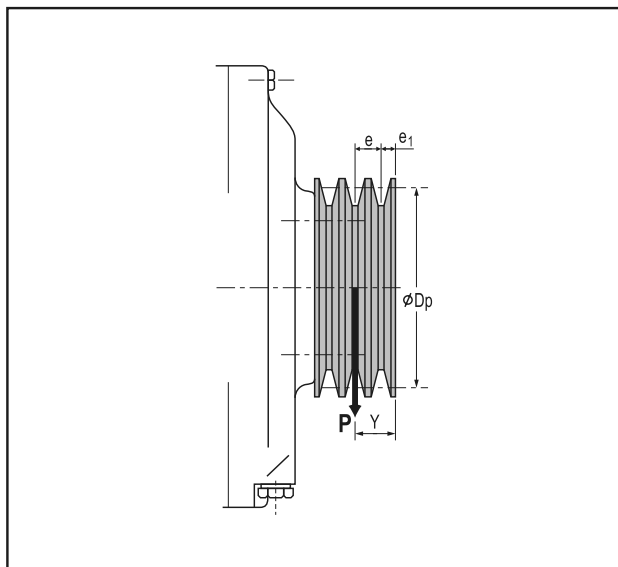
J* Values of inertia for PHR
For PHM the values of inertia are reversed for primary and secondary parts.

Hydrokinetic Fluid Couplings
TRACTION TYPE MOUNTING : PH

SIZE : 420-584

PROFILE OF GROOVES : SPB-SPC

Coupling Size (mm)	Profile Groove	N Grooves	Symbols	PITCH CIRCLE DIAMETER													
				200	212	224	236	250	265	280	300	315	335	355	400	450	
420	SPB	4	J P Y	0.15 21 70	0.19 25 70	0.25 30 70	0.31 35 70	0.40 41 70	0.59 54 90	0.74 62 90	0.99 74 90	1.2 83 90	1.55 97 90	1.95 112 90			
		5	J P Y	0.15 21 70	0.19 25 70	0.25 30 70	0.31 35 70	0.40 41 70	0.59 54 90	0.74 62 90	0.99 74 90	1.2 83 90	1.55 97 90	1.95 112 90			
		6	J P Y	0.15 21 70	0.19 25 70	0.25 30 70	0.31 35 70	0.40 41 70	0.59 54 90	0.74 62 90	0.99 74 90	1.2 83 90	1.55 97 90	1.95 112 90			
	SPC	3	J P Y	0.15 21 70	0.19 25 70	0.25 30 70	0.31 35 70	0.40 41 70	0.59 54 90	0.74 62 90	0.99 74 90	1.2 83 90	1.55 97 90	1.95 112 90			
		4	J P Y	0.15 21 70	0.19 25 70	0.25 30 70	0.31 35 70	0.40 41 70	0.59 54 90	0.74 62 90	0.99 74 90	1.2 83 90	1.55 97 90	1.95 112 90			
		5	J P Y	0.15 21 70	0.19 25 70	0.25 30 70	0.31 35 70	0.40 41 70	0.59 54 90	0.74 62 90	0.99 74 90	1.2 83 90	1.55 97 90	1.95 112 90			
		6	J P Y						0.47 45 90	0.59 54 90	0.74 62 90	0.99 74 90	1.2 83 90	1.55 97 90	1.95 112 90		
									0.47 46 82	0.60 53 82	0.76 53 105	1.07 68 105	1.34 79 105	1.36 62 110	1.88 80 110	3.4 122 110	
									0.47 46 82	0.60 53 82	0.76 53 105	1.07 68 105	1.34 79 105	1.36 62 110	1.88 80 110	3.4 122 110	
480	SPB	6	J P Y						0.47 46 82	0.60 53 82	0.76 53 105	1.07 68 105	1.34 79 105	1.36 62 110	1.88 80 110	3.4 122 110	
		8	J P Y						0.47 46 82	0.60 53 82	0.76 53 105	1.07 68 105	1.34 79 105	1.36 62 110	1.88 80 110	3.4 122 110	
		10	J P Y								0.76 53 105	1.07 68 105	1.34 79 105	1.36 62 110	1.88 80 110	3.4 122 110	
	SPC	5	J P Y						0.47 46 82	0.60 53 82	0.76 53 105	1.07 68 105	1.34 79 105	1.36 62 110	1.88 80 110	3.4 122 110	
		6	J P Y						0.47 46 82	0.60 53 82	0.76 53 105	1.07 68 105	1.34 79 105	1.36 62 110	1.88 80 110	3.4 122 110	
		8	J P Y								0.76 53 105	1.07 68 105	1.34 79 105	1.36 62 110	1.88 80 110	3.4 122 110	
584	SPC	6	J P Y						0.51 52 110	0.63 55 110	0.76 52 110	1.07 65 110	1.34 70 110	1.36 60 110	1.88 75 110	3.4 120 110	5.2 175 110
		8	J P Y										1.34 70 110	1.36 60 110	1.88 75 110	3.4 120 110	5.2 175 110



Profile Type	SPB 17X11	SPC 22X14
e	19	25
e1	11	15

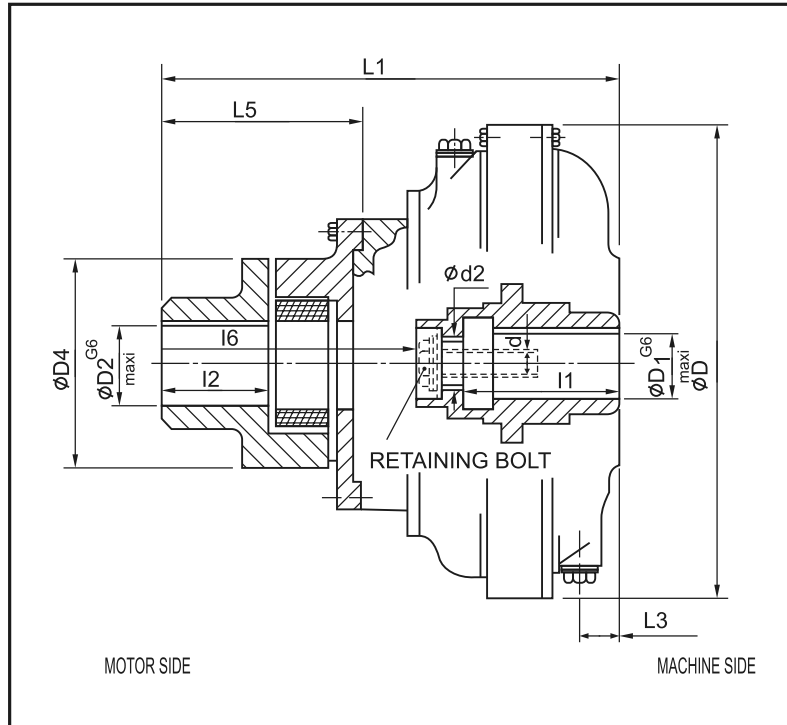
For other profiles refer to
ELECON

*J = kgm²
P = kg
Y = mm

Hydrokinetic Fluid Couplings
TRACTION TYPE MOUNTING : XR (Hollow Shaft)

SIZE : 320-760

TYPE : CDR with Flexible Coupling EX



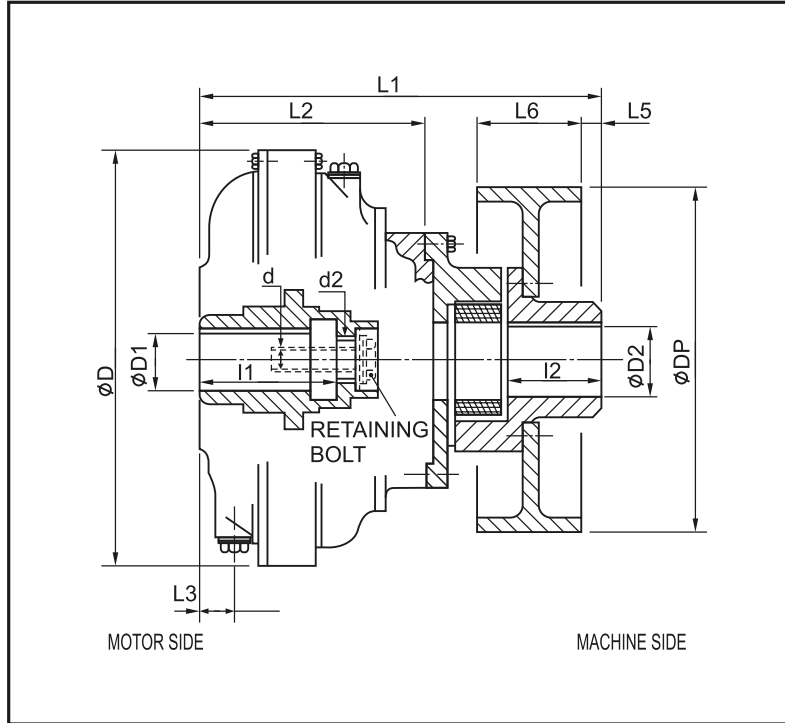
FLUID COUPLING		SIZE	320	370	420	450	480	584	660	760
FLEXIBLE COUPLING		TYPE	EX65	EX75	EX95	EX95	EX110	EX125	ES140	EX140
FLUID COUPLING + FLEXIBLE COUPLING	J (kgm ²)	FLUID COUPLING	0.28	0.55	0.88	1.53	1.7	3.75	6.5	12.1
		FLEXIBLE COUPLING	0.07	0.13	0.26	0.26	0.53	1.11	2.7	3.47
	TOTAL WEIGHT (DRY)	FLUID COUPLING	28	38	53	62	78	135	192	262
		FLEXIBLE COUPLING	14	22	33	33	50	78	128	141
		D	365	425	475	520	550	670	760	870
		D1	60	65	80	80	90	110	120	135
		D2	65	75	95	95	100	120	140	140
		D4	170	200	230	230	260	300	360	360
		L1	329.5	382	428	490	485	552	656	718
		L3	25	29	37	60	37	49	55	49
		L5	126.5	157	171	171	188	219	272	273
		I1	110	110	120	120	155	170	200	240
		I2	74.5	98.5	110	110	112.5	131.5	172	172
		I6	149.5	181	200	-	237	261	300	322
TAPPED HOLE		d2	1"BSP	1"BSP	1-1/4"BSP	1-1/4"BSP	1-1/4"BSP	1-1/4"BSP	1-1/4"BSP	1-1/4"BSP

Owing to continuous development and improvement all dimensions and characteristics are subject to change without notice.

Hydrokinetic Fluid Couplings
 TRACTION TYPE MOUNTING : XR (Hollow Shaft - Reverse Mounting)

SIZE : 320-760

TYPE : CDIR with Flexible Coupling EB



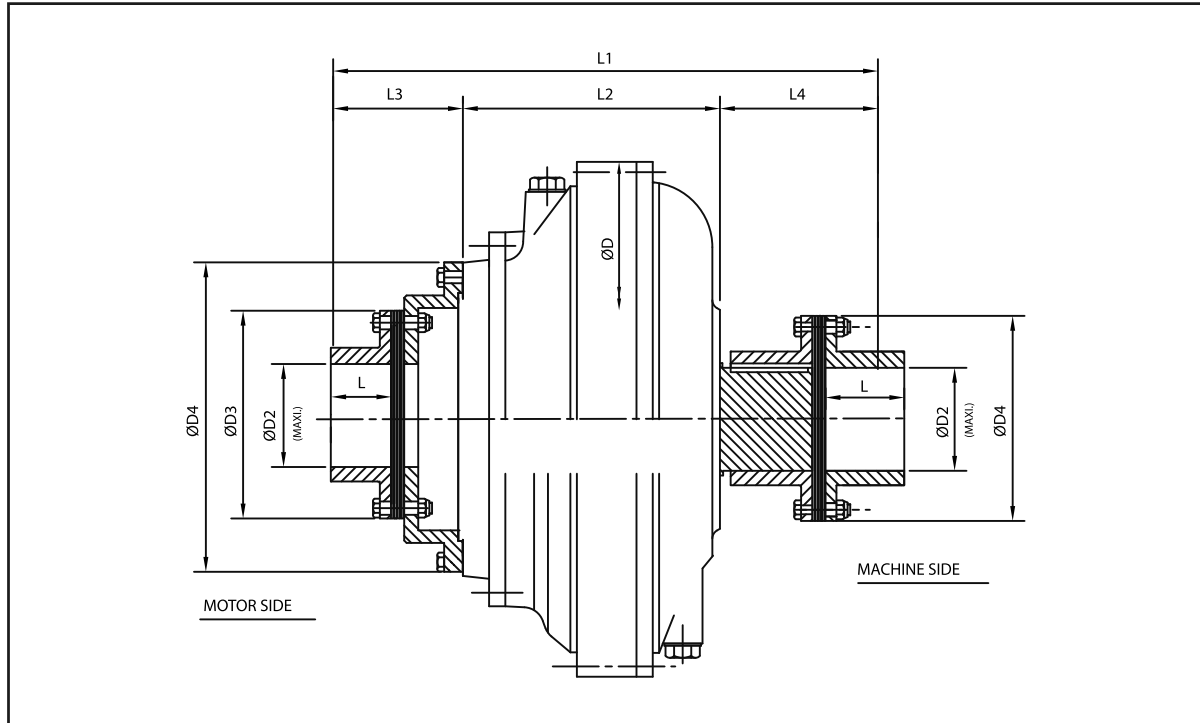
FLUID COUPLING		SIZE	320			370			420			450			480		584			660		760	
BRAKE DRUM		DIA (MM)	250	315	250	315	400	315	400	500	315	400	500	400	500	400	500	630	500	630	630	710	
FLEXIBLE COUPLING		TYPE	EB65			EB 75			EB95			EB 95			EB110		EB125			EB140		EB140	
FLUID COUPLING + FLEXIBLE COUPLING	J (kgm ²)	FLUID COUPLING	0.28			0.55			0.88			1.53			1.7		3.75			6.5		12.1	
		FLEXIBLE COUPLING	0.2	0.44	0.26	0.53	1.4	0.6	1.58	4.2	0.6	1.58	4.2	2	4.45	2.26	4.86	11.4	6.45	12.9	13.7	20.9	
	TOTAL WEIGHT (DRY)	FLUID COUPLING	28		38			53			62			78		135			192		262		
		FLEXIBLE COUPLING	24	33	32	41	62	53	75	113	53	75	113	97	130	112	150	209	203	310	270	320	
		D	365		425			475			520			550		670			760		870		
		D1	60		65			80			80			90		110			120		135		
		L1	329.5		382			428			490			485		552			656		718		
		L2	203		225			257			319			297		333			384		445		
		l1	110		119			120			120			155		170			200		240		
		DP	250	315	250	315	400	315	400	500	315	400	500	400	500	4400	500	630	500	630	630	710	
		D2	65	65	75	75	75	95	95	95	95	95	95	110	110	125	125	125	125	125	125	125	
		L5	25	10	35	35	25	20	35	25	20	35	25	35	25	25	20	20	30	50	50	30	
		L6	95	118	95	118	150	118	150	190	118	150	190	150	190	150	190	236	190	236	236	265	
		l2	74.5		98.5			110			110			112.5		131.5			172		172		
TAPPED HOLE		d2	1" BSP		1" BSP			1-1/4" BSP			1-1/4" BSP			1-1/4" BSP		1-1/4" BSP			1-1/4" BSP		1-1/4" BSP		

Owing to continuous development and improvement all dimensions and characteristics are subject to change without notice.

Hydrokinetic Fluid Couplings
TRACTION TYPE MOUNTING : R (Solid Shaft - Radially removable)

SIZE : 370-584

TYPE : CDR-R with Multidisc Coupling



NOTE : FOR DUAL DRIVE APPLICATION USE MULTIDISC TYPE COUPLING.

FLUID COUPLING WITH MULTI DISC COUPLING		SIZE	370	420	450	480	584
			80L-262	80L-300	80L-300	80-L300	80L-375
FLUID COUPLING + MULTI DISC COUPLING	J (kgm ²)	FLUID COUPLING	0.56	0.8	1.56	1.88	4.15
		MULTI DISC COUPLING	0.15	0.22	0.22	0.28	0.58
	TOTAL WEIGHT (DRY)	FLUID COUPLING	41	78	74	81	141
		MULTI DISC COUPLING	34	37	37	40	68
		D	425	475	520	550	670
		D2	75	90	90	90	100
		D3	168	198	198	198	246
		D4	252	290	290	330	392
		L	67	90	90	90	110
		L1	525	609	671	669	804
		L2	225	257	319	297	333
		L3	140	158	158	158	195
		L4	160	194	194	214	276

Owing to continuous development and improvement all dimensions and characteristics are subject to change without notice.

DETERMINATION OF THE INITIAL OIL FILLING

OIL FILLING

The size of fluid coupling will have been chosen to suit the speed of rotation and the power to be Transmitted the oil filling required will be dependent on:

- The power absorbed by driven machine and
- The required starting (or, stalling) torque.

N.B.: The oil filling should be allowed to exceed 80% of the total capacity of the fluid coupling when cold, because overfilling may cause excessive internal pressure and damage the seals.

To determine the amount of oil required:

USE

Table 3.a for CD (without delayed filling chamber)

Table 3.b for CDR (with delayed filling chamber)

Table 3.c for CDRP/CDRS (with extended filling chamber)

Calculate the nominal torque co-efficient, K_n , Using the following formula: $K_n = P/X$

The Co-efficient K_n corresponds to the nominal full load torque.

Calculate the co-efficient K_m corresponding to starting (or stalling) torque as shown in the following example.

EXAMPLE:

P = Motor power or transmitted power = 75kw at 1450 rpm.

T_s/T_n = Ratio of starting torque to full load torque = 1.4

For a coupling with a delayed filling Chamber CDR-420 at 1450 rpm, Value of X

From Table 01 = 29.

$K_n = P/X = 75/29 = 2.59$

$K_m = K_n \times (T_s/T_n) = 2.59 \times 1.4 = 3.63$

To Allow for the fact starting torque is delivered at a speed less than for Nomina torque, Divide the value of K_m by 0.9 i.e. $K_m = 3.63/0.9=4.03$

From Table 2.b for $K_m = 4.03$ Oil filling angle is about 65 degree and

From Table 3.b for angle = 65 Degree, Quantity of fluid is 11.0 Ltr. Approximately.

Referring to table-2, to obtain a full load slip not exceeding 3%, the Value of K_n should be less than Indicated for chosen filling.

OIL CHANGE

Recommended every 8000 hours of working or every two years.

CHECKING THE OIL FILL

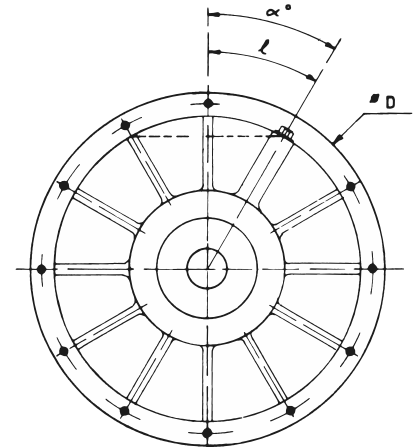
- 1) Place filling plug in vertical Position and remove.
- 2) Rotate the coupling slowly Until the oil just comes up to The filling hole. This position Must the angle top dead centre Calculated by method given above.
- 3) If necessary, remove or add Some oil.
- 4) Replace filling plug and tighten.

TABLE 1 : Value of X , For type CD, CDR, CDRP, CDRS)

FLUID COUPLING	Size	185	235	270	320	370	420	450	480	584	660	760
	Outside Diameter Dmm	225	275	315	365	425	475	520	550	670	760	870
SPEED IN RPM	750	0.06	0.2	0.38	0.9	1.9	3.57	4.47	6.85	18.7	34.4	70
	900	0.1	0.34	0.66	1.56	3.27	6.17	7.81	11.9	32.3	59.4	120
	1000	0.14	0.47	0.91	2.15	4.48	8.45	10.65	16.3	44.2	81.5	165
	1200	0.25	0.82	1.6	3.75	7.5	14.7	19.17	28.5	77.3	142	280
	1500	0.49	1.62	3.14	7.4	15.5	29	37	56.2	153	280	565
	1800	0.85	2.8	5.43	12.8	26.8	50.1	68.75	97.1	264	484	
	3000	3.91	12.9	25.2	59.3	123						

TABLE 2

FILLING ANGLE α°	FILLING ANGLE	Table 2.a		Table 2.b		Tbale 2.C	
	Coupling Type Co-efficient	CD		CDR		CDRP/CDRS	
		K_m	K_n	K_m	K_n	K_m	K_n
	50	5.6	2.4	5.7	2.7	-	-
	55	5.1	2.1	5.2	2.5	-	-
	60	4.5	1.9	4.7	2.2	4.7	2.8
	65	3.65	1.7	4.1	2.1	4.1	2.7
	70	2.66	1.6	3.2	2	3.2	2.5
	75	2	1.3	2.8	1.8	2.8	2.2
	80	1.5	0.8	2.4	1.7	2.4	2.1
	85	1.3	0.6	2.1	1.4	2.1	2
	90	1	0.4	1.6	1.2	1.6	1.8
	95	0.8	0.3	1.2	0.9	1.2	1.5
	100	0.7	0.2	0.96	0.7	0.95	1.3



$$l = \frac{\pi \times D \times \alpha}{360^\circ}$$

TABLE 3 : Approximate equivalent oil volume in litres at 20 C

COUPLING	Table 3.a											Table 3.b								Table 3.c						
	CD (Without Delayed Filling Chamber)											CDR (Without Delayed Filling Chamber)								CDRP/CDRS (Without Delayed Filling Chamber)						
FILLING ANGLE	SIZE	185	235	270	320	370	420	450	480	584	660	320	370	420	450	480	584	660	760	370	420	450	480	584	660	760
	50	1	1.9	2.6	4.2	7.1	10.05	15.4	15	26.55	44.5	5.2	9	12.5	20.5	20	34.1	52	75	10.9	15.2	22.6	22	36.5	59.5	90
	55	0.97	1.86	2.45	4	6.9	9.5	15.0	14.3	26.6	42.6	5	8.6	12.1	19.8	18.9	32.7	50.2	71	10.3	14.8	22.2	21.1	35.1	57.8	85
	60	0.93	1.8	2.3	3.8	6.5	8.9	14.1	13.6	24.6	40.6	4.7	8.2	11.3	18.5	17.9	31.2	47.8	67	10	14.2	20.9	20.2	33.6	55.1	80
	65	0.88	1.7	2.2	3.6	6	8.4	13.9	12.8	23	38.2	4.4	7.6	11	18.0	16.6	29.2	45	62	9.2	13.65	20.8	19.1	31.8	51.8	75
	70	0.82	1.58	2	3.3	5.7	7.8	12.9	12	21.4	35.8	4	7	10	16.4	15.3	27.2	42	57	8.3	13	19.4	18.1	30	48.2	68
	75	0.76	1.5	1.9	3.1	5.2	7.2	12.1	11.2	20	33.4	3.7	6.5	9.4	15.4	14.3	25	39	63	7.8	11.9	18.2	16.9	28.2	44.2	63
	80	0.7	1.39	1.8	2.9	4.8	6.7	10.8	10.2	18.4	31	3.3	5.9	8.6	14.1	13.3	22.8	36	49	7	10.8	16.6	15.7	26.2	41	58
	85	0.64	1.27	1.7	2.65	4.4	6.3	10.2	9.3	16.8	28.6	3.1	5.6	8.1	13.3	12.1	20.9	33	46	6.6	9.7	15.9	14.5	24.2	37.4	54
	90	0.57	1.14	1.55	2.4	4	5.7	9.3	8.5	15.3	26.3	2.9	5	7.25	11.9	10.9	19	30.2	42	6	8.6	14.4	13.2	22.2	34.1	49
	95	0.52	1.02	1.4	2.25	3.7	5	8.7	7.8	14	24	2.7	4.8	6.5	10.7	9.6	17.5	27.6	38	5.9	7.3	13.3	12	20	31.2	44
100	0.46	0.9	1.3	2.1	3.4	4.6	8.3	7.2	13	22	2.5	4.2	5.9	9.7	8.4	15.9	25.3	34	6	6.5	12.3	10.7	17.8	28.6	40	

Owing to continuous development and improvement all dimensions and characteristics are subject to change without notice.

radicon 
with you at every turn

 **ELECON**
GEARING THE FUTURE

benzlers 
with you at every turn

 **MSGEARS**
A MAROC SEALING GROUP COMPANY

 92, Lot Mauritanie - Zone Industrielle Bernoussi
Casablanca MAROC 20590

 www.msgears.com  msgears@msgears.com

 (+212) 05 22 35 41 49/50

 (+212) 05 22 35 41 52

 (+212) 06 62 14 80 39